

Carra

Designed by Alison Green



skill level: Intermediate
Shown in size 36"

finished measurements

Bust—33 (36, 39, 42, 45, 48, 51, 54)"
Length—26 (26½, 27, 27½, 28, 28½, 29, 29½)"

Note: This garment was designed with approximately 2–4" of ease. Please take this into consideration when selecting your size.

materials

BERROCO MODERN COTTON

(100 grs): 6 (6, 7, 7, 8, 9, 9, 10) hanks
#1625 Jerimoth Hill

Straight needles, size 6 (4.00 mm) or
size to obtain gauge

16" circular needle, size 6 (4.00 mm)

Cable needle (cn)

4 st markers

1 st holder

gauge

21 sts and 28 rows = 4" in St st

To save time, take time to check gauge

[Berroco Modern Cotton™](#)

Find this Yarn 



BERROCO®

www.berroco.com

NOTE: We recommend using yarns called for in our instructions. Every effort has been made to ensure that directions contained in this book are accurate and complete, however errors do occur. We cannot be responsible for variance of individual knitters, human or typographical errors.

All pattern PDFs are updated when corrections are made. In the event of finding an error, please make sure you've downloaded the most recent version.

BACK

With straight needles, cast on 94 (106, 110, 118, 126, 134, 142, 150) sts.

Ribbing: Row 1 (RS): K2, * p2, k2, rep from * across.

Row 2: P2, * k2, p2, rep from * across. Rep these 2 rows until piece measures 2" from beg, end on WS, dec 1 st at end of last row—93 (105, 109, 117, 125, 133, 141, 149) sts.

Welt Detail: Purl 1 row, knit 2 rows, purl 2 rows, knit 1 row, end on WS—2 welts.

Establish Charts: Row 1 (RS): K14 (20, 22, 26, 30, 34, 38, 42), pm, work Row 1 of Chart B over 21 sts, pm, work Row 1 of Chart A over 23 sts, pm, work Row 1 of Chart B over 21 sts, pm, knit to end.

Row 2: Purl to first marker, sm, work Row 2 of Chart B to next marker, sm, work Row 2 of Chart A to next marker, sm, work Row 2 of Chart A to last marker, sm, purl to end. Work even in pat as established until piece measures 6" from beg, end on WS.

Dec Row (RS): K1, k2tog, work to last 3 sts, SSK, k1—2 sts dec'd. Rep Dec Row every 2½" twice more—87 (99, 103, 111, 119, 127, 135, 143) sts. Work even until piece measures 13" from beg, end on WS.

Inc Row (RS): K1, M1R, work to last st, M1L, k1—2 sts inc'd. Rep Inc Row every 2" twice more 93 (105, 109, 117, 125, 133, 141, 149) sts. Work even until piece measures 18" from beg, end on WS.

Shape Armholes: Bind off 4 (5, 5, 6, 6, 7, 7, 8) sts at beg of the next 2 rows—85 (95, 99, 105, 113, 119, 127, 133) sts.

Dec Row (RS): K1, k2tog, work to last 3 sts, SSK, k1—2 sts dec'd. Rep Dec Row every RS row twice more—81 (87, 91, 97, 101, 107, 113, 117) sts. Work even until armholes measure 7 (7½, 8, 8½, 9, 9½, 10, 10½)", end on WS.

Shape Shoulders: Bind off 5 (6, 7, 8, 8, 9, 10,



11) sts at beg of the next 4 rows, then 5 (6, 6, 7, 9, 10, 11, 11) sts at beg of the next 2 rows. Bind off remaining 51 sts for back neck.

FRONT

Work as for back until armholes measure 5 (5½, 6, 6½, 7, 7½, 8, 8½)", end on WS—81 (87, 91, 97, 101, 107, 113, 117) sts.

Shape Neck: Next Row (RS): Work 22 (25, 27, 30, 32, 35, 38, 40) sts, sl these sts to holder for left side; bind off center 37 sts, work to end—22 (25, 27, 30, 32, 35, 38, 40) sts.

Right Side: Work 1 WS row. Dec 1 st at neck edge on next row, then every RS row 6 times more.

When armhole measures 7 (7½, 8, 8½, 9, 9½, 10, 10½)", end on RS. Bind off 5 (6, 7, 8, 8, 9, 10, 11) sts at armhole edge twice, then 5 (6, 6, 7, 9, 10, 11, 11) sts once for shoulder.

Left Side: With WS facing, sl 22 (25, 27, 30, 32, 35, 38, 40) sts from holder to straight needle. Join yarn and work 1 WS row. Dec 1 st at neck edge on next row, then every RS row 6 times more. When armhole measures 7 (7½, 8, 8½, 9, 9½, 10, 10½)", end on RS. Bind off 5 (6, 7, 8, 8, 9, 10, 11) sts at armhole edge twice, then 5 (6, 6, 7, 9, 10, 11, 11) sts once for shoulder.



SLEEVES

With straight needles, cast on 54 (54, 54, 54, 58, 58, 58, 58) sts. Work in ribbing as for back for 2", end on WS, dec 1 st at end of last row—53 (53, 53, 53, 57, 57, 57, 57) sts. Work welt detail, end on WS.

Establish Chart: Row 1 (RS): K16 (16, 16, 16, 18, 18, 18, 18), pm, work Row 1 of Chart B over 21 sts, pm, knit to end.

Row 2: Purl to first marker, sm, work Row 2 of Chart B to last marker, sm, purl to end. Work even in pat as established until sleeve measures 4" from beg, end on WS.

Inc Row (RS): K1, M1R, work to last st, M1L, k1—2 sts inc'd. Rep Inc Row every 1½ (1, ¾, ¾, ¾, ¾, ¾, ¾)" 8 (11, 15, 15, 14, 14, 16, 16) times more—71 (77, 81, 81, 87, 87, 91, 91) sts. Work even until sleeve measures 18" from beg, end on WS.

Shape Cap: Bind off 4(5-5-6-6-7-7-8) sts at beg of the next 2 rows—63(67-71-71-75-73-77-75) sts. Work 1 rows even, end on WS.

Dec Row (RS): K1, k2tog, work to last 3 sts, SSK, k1—2 sts dec'd. Rep Dec Row every 4th row 0 (0, 0, 3, 3, 7, 6, 9) times more, then every RS row 15 (15, 17, 11, 13, 5, 8, 2) times, end on WS—31 (35, 35, 41, 41, 47, 47, 51) sts. Bind off 5 sts at beg of the next 4 rows. Bind off remaining 11 (15, 15, 21, 21, 27, 27, 27, 31) sts.

FINISHING

Sew shoulder seams.

Neck Edging: With RS facing, using circular needle, beg at left shoulder seam, pick up and knit 17 sts along left front neck edge, 37 sts across front neck edge, 17 sts along right front neck edge, then 51 sts across back neck edge—122 sts. Place marker and join for working in the round. Purl 3 rnds. Bind off purlwise. Sew in sleeves. Sew side and sleeve seams, leaving 2" of ribbing at lower edges of body open for side slits. Weave in all ends and block as desired.

CHART A

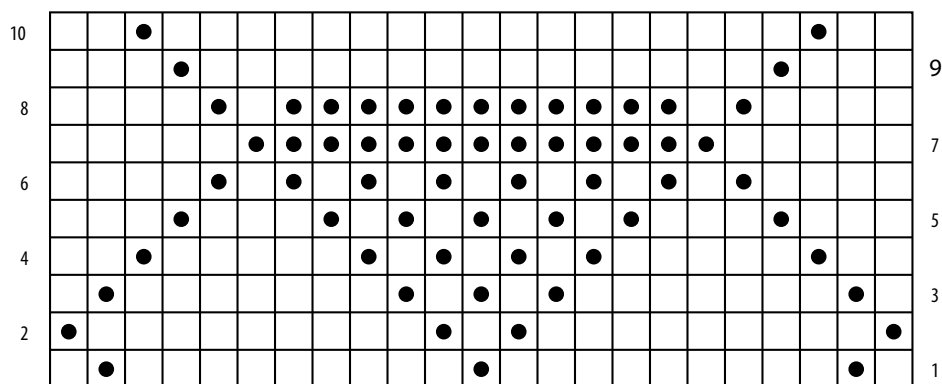
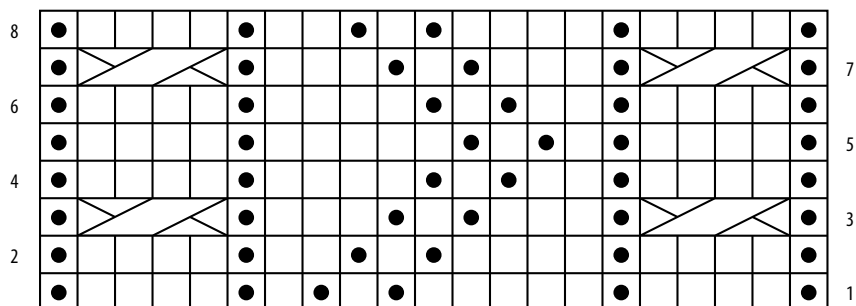
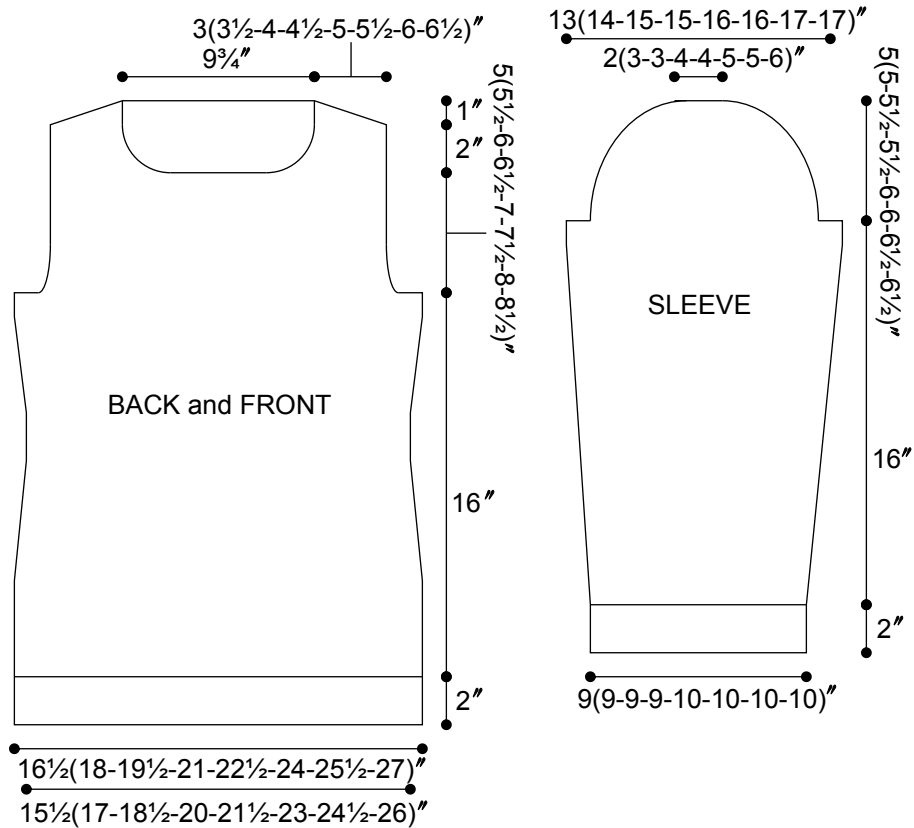


CHART B



KEY TO CHART

- knit on RS; purl on WS
 purl on RS; knit on WS
 sl 2 sts to cn and hold in BACK, k2, k2 from cn



STANDARD ABBREVIATIONS & TERMS

beg: beginning
CC: contrasting color
CDD: Centered Double Decrease—Slip 2 together (as if to k2tog), knit 1, pass the 2 slipped stitches over
cn: cable needle
dec: decrease
dpn(s): double pointed needle(s)
end on WS: end having just completed a Wrong Side row.
end on RS: end having just completed a Right Side row
Garter St: Knit EVERY row when working back and forth in rows. Knit 1 round, purl 1 round when working in the round.
inc: increase
k: knit
k tbl: knit through the back loop(s)
k2tog: knit 2 stitches together
k3tog: knit 3 stitches together
kfb: knit in the front and back of the next st
LH: left hand
LLI: Left Lifted Increase—Insert LH needle into the purl bump one row below the st just worked on the RH needle and knit into this st (1 st inc'd)
M1: Make 1—Pick up horizontal strand between stitch just worked and next stitch from front to back, place on left hand needle, knit this stitch through the back (1 stitch increased).
M1L: Make 1 Left—Work as for M1.
M1p: Make 1 purl—Pick up horizontal strand between stitch just worked and next stitch from front to back, place on left hand needle, purl this stitch through the back (1 stitch increased).
M1pL: Make 1 purl Left—Work as for M1p.
M1pR: Make 1 purl Right—Pick up horizontal strand between stitch just worked and next stitch from back to front, place on left hand needle, purl this stitch through the front (1 stitch increased).
M1R: Make 1 Right—Pick up horizontal strand between stitch just worked and next stitch from back to front, place on left hand needle, knit this stitch through the front (1 stitch increased).
MC: main color
p: purl
p tbl: purl through the back loop(s)
p2tog: purl 2 stitches together

p3tog: purl 3 stitches together
pat(s): pattern(s)
pm: place marker
psso: pass slipped stitch over knit stitch
rep: repeat
Rev St st: Reverse Stockinette Stitch—Purl 1 row, knit 1 row alternately when working back and forth in rows. The purl side is the right side of the work. Purl EVERY round when working in the round.
RH: right hand
RLI: Right Lifted Increase—Insert RH needle into the purl bump of the next st on the LH needle and knit into this st (1 st inc'd)
rnd(s): round(s)
RS: right side
sl: slip
sm: slip marker
SSK: Slip 2 stitches knitwise, insert point of left hand needle through fronts of these 2 stitches and knit 2 together.
SSP: Slip 2 stitches knitwise, transfer these 2 stitches back to left hand needle, purl 2 together through the back loops.
SSSK: Slip 3 stitches knitwise, insert point of left hand needle through fronts of these 3 stitches and knit 3 together.
st(s): stitch(es)
St st: Stockinette Stitch—Knit 1 row, purl 1 row alternately when working back and forth in rows. The knit side is the right side of work. Knit EVERY round when working in the round.
tbl: through back loop(s)
w&t: wrap and turn, a method of concealing a hole created in short row shaping. **On RS rows:** With yarn held in front, slip next stitch purlwise, then bring yarn between needles to the back. Slip that same stitch back to the left needle. Turn your work. **On WS Rows:** With yarn held in back, slip next stitch purlwise, then bring yarn between needles to the front. Slip that same stitch back to the left needle. Turn your work. Unless otherwise indicated, each time you come to a wrapped stitch when working subsequent rows, slip the wrap back over stitch and onto needle, then work the wrap together with its accompanying stitch.
WS: wrong side
wyib: with yarn in back
wyif: with yarn in front
yo: yarn over

Love Berroco patterns?
 Sign up for our **KnitBits®** newsletter.

