

Benton

Designed by the Berroco Design Team / Skill level: Intermediate



FINISHED MEASUREMENTS
Approximately 48" / 122 cm wide x
60" / 152 cm long

YARN
BERROCO COMFORT (100 grs):
12 balls #9798 Twilight

NEEDLES and NOTIONS
32" / 80 cm or longer circular
knitting needle, size 9 / 5.5 mm or
size to obtain gauge
Cable needle (cn)

GAUGE
19 sts and 28 rows = 4" in Pattern
Stitch
Gauge shown is after blocking.
To save time and ensure accurate
measurements, take time to check
gauge.

Berroco Comfort®

Find this Yarn 



www.berroco.com

BERROCO®

We recommend using yarns called for in our instructions. Every effort has been made to ensure that directions contained in this book are accurate and complete, however errors do occur. We cannot be responsible for variance of individual knitters, human or typographical errors.

All pattern PDFs are updated when corrections are made. In the event of finding an error, please make sure you've downloaded the most recent version.

STITCH GLOSSARY

CB8: Slip 4 sts to cn and hold in BACK, k4, k4 from cn

CF8: Slip 4 sts to cn and hold in FRONT, k4, k4 from cn

THROW

With circular needle, cast on 236 sts. DO NOT join.

Work in Pattern Stitch as follows, or work from chart.

Note: Pattern Stitch starts and ends as a multiple of 32 sts + 12; due to the nature of this pattern, the number of stitches will vary from row to row.

Row 1: K12, * p2, [yo, k1, yo, p2, k1, p2] 3 times, k12; rep from * 6 times more.

Row 2: P12, k2, * [p1, k2, p3, k2] 3 times, p12; rep from * 6 times more.

Row 3: K12, * p2, [k3, p2, k1, p2] 3 times, k12; rep from * 6 times more.

Row 4: P12, * k2, [p1, k2, p3tog, k2] 3 times, p12; rep from * 6 times more.

Row 5: CB8, k4, * p2, [k1, p2, yo, k1, yo, p2] 3 times, CB8, k4; rep from * 6 times more.

Row 6: P12, * k2, [p3, k2, p1, k2] 3 times, p12; rep from * 6 times more.

Row 7: K12, * p2, [k1, p2, k3, p2] 3 times, k12; rep from * 6 times more.

Row 8: P12, * k2, [p3tog, k2, p1, k2] 3 times, p12; rep from * 6 times more.

Row 9: K12, * p2, [yo, k1, yo, p2, k1, p2] 3 times, k12; rep from * 6 times more.

Row 10: P12, * k2, [p1, k2, p3, k2] 3 times, p12; rep from * 6 times more.

Row 11: K4, CF8, * p2, [k3, p2, k1, p2] 3 times, k4, CF8; rep from * 6 times more.

Row 12: P12, * k2, [p1, k2, p3tog, k2] 3 times, p12; rep from * 6 times more.

Row 13: K12, * p2, [k1, p2, yo, k1, yo, p2] 3 times, k12; rep from * 6 times more.

Row 14: P12, * k2, [p3, k2, p1, k2] 3 times, p12; rep from * 6 times more.

Row 15: K12, * p2, [k1, p2, k3, p2] 3 times, k12; rep from * 6 times more.



Row 16: P12, * k2, [p3tog, k2, p1, k2] 3 times, p12; rep from * 6 times more.

Row 17: CB8, k4, * p2, [yo, k1, yo, p2, k1, p2] 3 times, CB8, k4; rep from * 6 times more.

Row 18: P12, * k2, [p1, k2, p3, k2] 3 times, p12; rep from * 6 times more.

Row 19: K12, * p2, [k3, p2, k1, p2] 3 times, k12; rep from * 6 times more.

Row 20: P12, * k2, [p1, k2, p3tog, k2] 3 times, p12; rep from * 6 times more.

Row 21: K12, * p2, [k1, p2, yo, k1, yo, p2] 3 times, k12; rep from * 6 times more.

Row 22: P12, * k2, [p3, k2, p1, k2] 3 times, p12; rep from * 6 times more.

Row 23: K4, CF8, * p2, [k1, p2, k3, p2] 3 times, k4, CF8; rep from * 6 times more.

Row 24: P12, * k2, [p3tog, k2, p1, k2], p12; rep from * 6 times more.

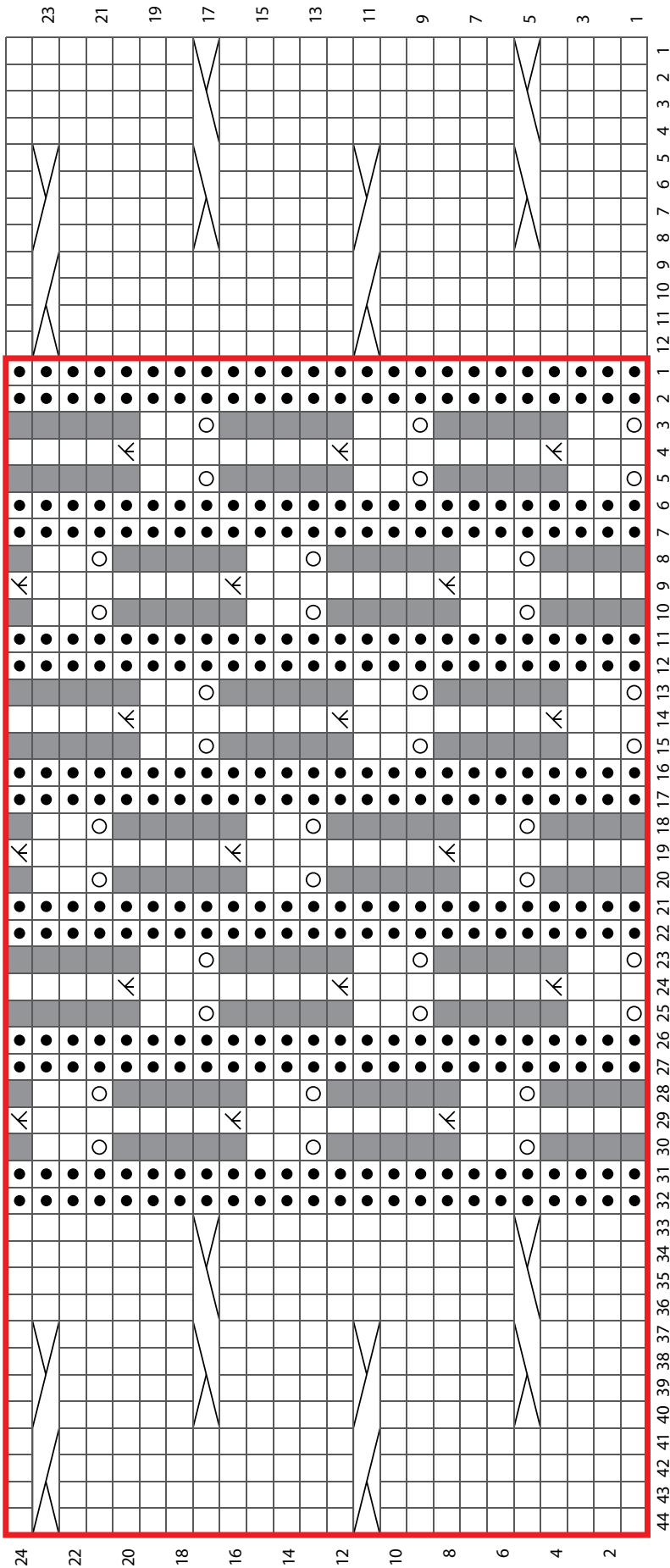
Rep Rows 1–24 of Pattern Stitch until piece measures approximately 60" / 152 cm from cast-on, end on WS. Bind off.

FINISHING

Weave in all ends and block as desired.



BENTON CHART



KEY TO CHART

- knit on RS; purl on WS
- purl on RS; knit on WS
- p3tog on WS
- yarn over



CB8: sl 4 to cn and hold in BACK, k4, k4 from cn

pattern repeat

placeholder—no stitch

CHART NOTES

Work from right to left on RS rows and from left to right on WS rows.

CF8: sl 4 to cn and hold in FRONT, k4, k4 from cn





STANDARD ABBREVIATIONS & TERMS

beg: beginning
CC: contrasting color
CDD: Centered Double Decrease—Slip 2 together (as if to k2tog), knit 1, pass the 2 slipped stitches over
cn: cable needle
dec: decrease
dpn(s): double pointed needle(s)
end on WS: end having just completed a Wrong Side row.
end on RS: end having just completed a Right Side row
Garter St: Knit EVERY row when working back and forth in rows. Knit 1 round, purl 1 round when working in the round.
inc: increase
k: knit
k tbl: knit through the back loop(s)
k2tog: knit 2 stitches together
k3tog: knit 3 stitches together
kfb: knit in the front and back of the next st
LH: left hand
LLI: Left Lifted Increase—Insert LH needle into the purl bump one row below the st just worked on the RH needle and knit into this st (1 st inc'd)
M1: Make 1—Pick up horizontal strand between stitch just worked and next stitch from front to back, place on left hand needle, knit this stitch through the back (1 stitch increased).
M1L: Make 1 Left—Work as for M1.
M1p: Make 1 purl—Pick up horizontal strand between stitch just worked and next stitch from front to back, place on left hand needle, purl this stitch through the back (1 stitch increased).
M1pL: Make 1 purl Left—Work as for M1p.
M1pR: Make 1 purl Right—Pick up horizontal strand between stitch just worked and next stitch from back to front, place on left hand needle, purl this stitch through the front (1 stitch increased).
M1R: Make 1 Right—Pick up horizontal strand between stitch just worked and next stitch from back to front, place on left hand needle, knit this stitch through the front (1 stitch increased).
MC: main color
p: purl
p tbl: purl through the back loop(s)
p2tog: purl 2 stitches together
p3tog: purl 3 stitches together
pat(s): pattern(s)

pm: place marker
pssso: pass slipped stitch over knit stitch
rep: repeat
Rev St st: Reverse Stockinette Stitch—Purl 1 row, knit 1 row alternately when working back and forth in rows. The purl side is the right side of the work. Purl EVERY round when working in the round.
RH: right hand
RLI: Right Lifted Increase—Insert RH needle into the purl bump of the next st on the LH needle and knit into this st (1 st inc'd)
rnd(s): round(s)
RS: right side
sl: slip
sm: slip marker
SSK: Slip 2 stitches knitwise, insert point of left hand needle through fronts of these 2 stitches and knit 2 together.
SSP: Slip 2 stitches knitwise, transfer these 2 stitches back to left hand needle, purl 2 together through the back loops.
SSSK: Slip 3 stitches knitwise, insert point of left hand needle through fronts of these 3 stitches and knit 3 together.
st(s): stitch(es)
St st: Stockinette Stitch—Knit 1 row, purl 1 row alternately when working back and forth in rows. The knit side is the right side of work. Knit EVERY round when working in the round.
tbl: through back loop(s)
w&t: wrap and turn, a method of concealing a hole created in short row shaping. On RS rows: With yarn held in front, slip next stitch purlwise, then bring yarn between needles to the back. Slip that same stitch back to the left needle. Turn your work. On WS Rows: With yarn held in back, slip next stitch purlwise, then bring yarn between needles to the front. Slip that same stitch back to the left needle. Turn your work. Unless otherwise indicated, each time you come to a wrapped stitch when working subsequent rows, slip the wrap back over stitch and onto needle, then work the wrap together with its accompanying stitch.
WS: wrong side
wyib: with yarn in back
wyif: with yarn in front
yo: yarn over

Love Berroco patterns?
 Sign up for our **KnitBits®** newsletter.

