

Keely

Designed by the Berroco Design Team / Skill level: Intermediate



FINISHED MEASUREMENTS

Approximately 46" / 117 cm wide x
27" / 69 cm down center

YARN

BERROCO ULTRA ALPACA (100 grs):
3 hanks #62168 Candy Floss Mix

NEEDLES and NOTIONS

32" / 80 cm circular needle, size 8 /
5 mm or size to obtain gauge
2 stitch markers

GAUGE

17 sts and 26 rows = 4" in St st
*To save time and ensure accurate
measurements, take time to check
gauge.*

[Berroco Ultra® Alpaca](#)

Find this Yarn 



BERROCO®



www.berroco.com

Yarn for all makers™

We recommend using yarns called for in our instructions. Every effort has been made to ensure that directions contained in this book are accurate and complete, however errors do occur. We cannot be responsible for variance of individual knitters, human or typographical errors.

All pattern PDFs are updated when corrections are made. In the event of finding an error, please make sure you've downloaded the most recent version.

NOTE

When working chart, the number of stitches will be decreased at the center point on RS rows. When working the top section, stitches will still be decreased at the center point, but will also be decreased at each side.

SHAWL

Border: Cast on 265 sts.

Set-Up Row (WS): P132, pm, p1, pm, purl to end.

Follow chart until 36 rows have been completed, end on WS—229 sts.

Top Section: Row 1 (RS): P2, k2tog, knit to 2 sts before first marker, k2tog, sm, k1, sm, SSK, knit to last 4 sts, SSK, p2—4 sts dec'd.

Row 2: K2, purl to last 2 sts, k2.

Row 3: P2, k2tog, knit to 4 sts before first marker, SSK, k2tog, sm, k1, sm, SSK, k2tog, knit to last 4 sts, SSK, p2—6 sts dec'd.

Row 4: K2, purl to last 2 sts, k2.

Rep these 4 rows 21 times more, end on WS—9 sts.

Next Row (RS): P2tog, CDD, p2tog—5 sts.

Following Row: P2tog, p3tog. Bind off last stitch. Fasten off.

FINISHING

Weave in all ends and block as desired.



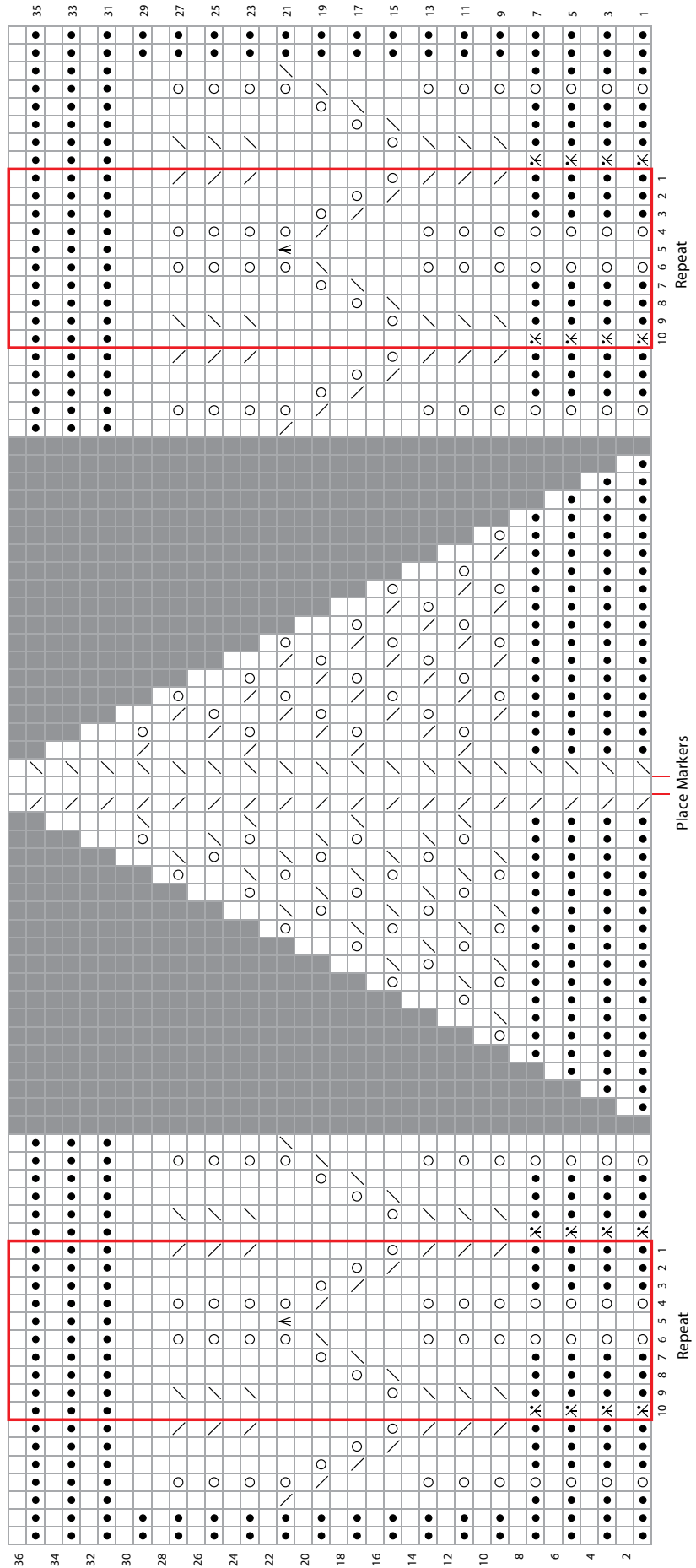
KEY TO CHART

- knit on RS; purl on WS
- purl on RS; knit on WS
- yarn over
- k2tog
- SSK
- p3tog
- CDD
- pattern repeat
- placeholder—no stitch

CHART NOTES

Work from right to left on RS rows and from left to right on WS rows.

KEELY CHART





STANDARD ABBREVIATIONS & TERMS

beg: beginning
CC: contrasting color
CDD: Centered Double Decrease—Slip 2 together (as if to k2tog), knit 1, pass the 2 slipped stitches over
cn: cable needle
cont: continue
ch: chain
dec: decrease **dc:** double crochet
dtr: double treble crochet
dpn(s): double pointed needle(s)
end on WS: end having just completed a Wrong Side row.
end on RS: end having just completed a Right Side row
est: established
hdc: half double crochet
inc: increase
Garner St: Knit EVERY row when working back and forth in rows. Knit 1 round, purl 1 round when working in the round.
inc: increase
k: knit
k tbl: knit through the back loop(s)
k2tog: knit 2 stitches together
k3tog: knit 3 stitches together
kfb: knit in the front and back of the next st
LH: left hand
LLI: Left Lifted Increase—Insert LH needle into the purl bump one row below the st just worked on the RH needle and knit into this st (1 st inc'd)
M1: Make 1—Pick up horizontal strand between stitch just worked and next stitch from front to back, place on left hand needle, knit this stitch through the back (1 stitch increased).
M1L: Make 1 Left—Work as for M1.
M1p: Make 1 purl—Pick up horizontal strand between stitch just worked and next stitch from front to back, place on left hand needle, purl this stitch through the back (1 stitch increased).
M1pL: Make 1 purl Left—Work as for M1p.
M1pR: Make 1 purl Right—Pick up horizontal strand between stitch just worked and next stitch from back to front, place on left hand needle, purl this stitch through the front (1 stitch increased).
M1R: Make 1 Right—Pick up horizontal strand between stitch just worked and next stitch from back to front, place on left hand needle, knit this stitch through the front (1 stitch increased).
MC: main color
p: purl
p tbl: purl through the back loop(s)
p2tog: purl 2 stitches together
p3tog: purl 3 stitches together
pat(s): pattern(s)
pm: place marker

psso: pass slipped stitch over knit stitch
rep: repeat
Rev St st: Reverse Stockinette Stitch—Purl 1 row, knit 1 row alternately when working back and forth in rows. The purl side is the right side of the work. Purl EVERY round when working in the round.
RH: right hand
RLI: Right Lifted Increase—Insert RH needle into the purl bump of the next st on the LH needle and knit into this st (1 st inc'd)
rnd(s): round(s)
RS: right side
sc: single crochet
sl: slip
sliding loop: Form a loop of yarn around your fingers, with the end attached to the ball on the right and the tail on the left. Insert hook into the loop under both pieces of yarn and draw up a loop onto hook. (This does not count as your first stitch.) Work first row into the original loop. Pull up the yarn tail after your first row is complete to close the loop.
sm: slip marker
sp: space
SSK: Slip 2 stitches knitwise, insert point of left hand needle through fronts of these 2 stitches and knit 2 together.
SSP: Slip 2 stitches knitwise, transfer these 2 stitches back to left hand needle, purl 2 together through the back loops.
SSSK: Slip 3 stitches knitwise, insert point of left hand needle through fronts of these 3 stitches and knit 3 together.
st(s): stitch(es)
St st: Stockinette Stitch—Knit 1 row, purl 1 row alternately when working back and forth in rows. The knit side is the right side of work. Knit EVERY round when working in the round.
tbl: through back loop(s)
tog: together
tr: treble
w&t: wrap and turn, a method of concealing a hole created in short row shaping. On RS rows: With yarn held in front, slip next stitch purlwise, then bring yarn between needles to the back. Slip that same stitch back to the left needle. Turn your work. On WS Rows: With yarn held in back, slip next stitch purlwise, then bring yarn between needles to the front. Slip that same stitch back to the left needle. Turn your work. Unless otherwise indicated, each time you come to a wrapped stitch when working subsequent rows, slip the wrap back over stitch and onto needle, then work the wrap together with its accompanying stitch.
WS: wrong side
wyib: with yarn in back
wyif: with yarn in front
yo: yarn over

Love Berroco patterns?
 Sign up for our **KnitBits®** newsletter.

